

PRX-T₃₃[®]

WiQO

ASSOCIATED WITH
INJECTIVE BIOREVITALISATION



PROTOCOL FOR USE

ADVANTAGES

Synergistic effect whose results are significantly better than two separate treatments for greater dermal stimulation (see chart).

The oedema produced by PRX-T₃₃ attenuates the pain of the subsequent injections and reduces the formation of ecchymoses.

PRX-T₃₃ provides deep and immediate hydration, which distends the skin producing a mild peel effect that brightens it and makes it radiant.

Patients are immediately satisfied, while the effect of fibroblast stimulation takes about twenty days to be visible.

TREATMENT METHOD

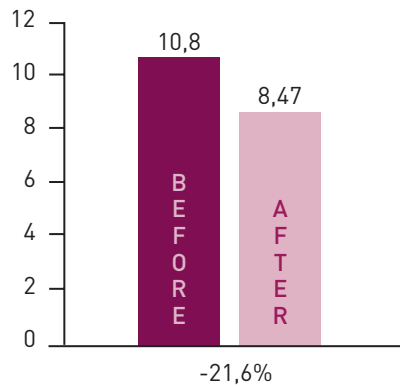
- 1) Cleanse skin with P Solution or other delicate cleanser and dry well.
- 2) Apply PRX-T₃₃ manually with a massage all over the area to be treated until fully absorbed.
- 3) Repeat application 2-3 times (exo biorevitalisation).
- 4) Immediately afterwards inject the mix of biorevitalising substances in the same area through small intradermal wheals (endo biorevitalisation).

PROTOCOL

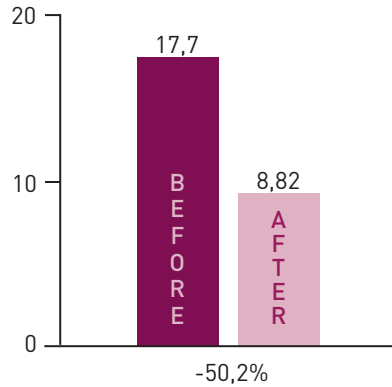
The biorevitalisation treatments are carried out in 3 sessions, 20 days apart; during the interval between two sessions of combined treatment, make one application of PRX-T₃₃ alone.

Session 1: PRX-T₃₃ + biorevitalising substances > Session 2: PRX-T₃₃ > Session 3: PRX-T₃₃ + biorevitalising substances > Session 4: PRX-T₃₃ > Session 5: PRX-T₃₃ + biorevitalising substances

Injective biorevitalisation
Overall wrinkle size



PRX-T₃₃ + Injective biorevitalisation
Overall wrinkle size



Combined treatment performed on the right side of the face.

Instrumental evaluation carried out with Antera 3D

The association of the two bio-revitalisation treatments leads to a 50,2% improvement vs the 21,6% improvement obtained with injective biorevitalisation alone.



BEFORE APPLICATIONS



AFTER APPLICATIONS

Right side: combined treatments
Left side: injectable bio-revitaliser only

Direct line to contact dermatologists and research biologists for scientific questions or enquiries regarding outpatient treatment:
scientificdiv.gpq@wiqo.eu

wiQO[®]
a GPQ brand

GPQ srl

Operational Headquarters: Via Flavia, 23/1 - 34148 Trieste - Italy
Tel.: +39 040 360408 - Fax: +39 040 761393 - gpq@wiqo.eu
www.wiqo.com

PRX-T₃₃[®]

WiQO

ASSOCIATED WITH
MICRONEEDLING



PROTOCOL FOR USE

INDICATIONS

Scars (acne, chicken pox, etc.) also on the back, indelible wrinkles, enlarged pores, post-inflammatory dermal atrophy (acne).

TREATMENT METHOD

- 1) Cleanse skin with P Solution or other delicate cleanser and dry well.
- 2) Apply anaesthetic cream on the area to be treated.
- 3) Remove the anaesthetic cream.
- 4) Wash again and dry well.
- 5) Apply PRX-T₃₃ manually with a massage all over the area to be treated until fully absorbed. When treating small areas, apply using the special spatula covered with a nitrile glove.
- 6) Repeat the application of PRX-T₃₃ for 2-3 times. The depressed areas of the scars must rise.
- 7) Carry out the microneedling with the specific technique.
- 8) Immediately after the needling, apply PRX-T₃₃ (1-2 layers).
- 9) Rinse the area with running water.
- 10) Apply wet gauze on skin and place an ice pack on top.

Do not apply any products in the following 24 hours (creams, make-up, etc).

PROTOCOL

1 Session as described above for 3-6 times, depending on the case.



BEFORE APPLICATIONS



AFTER 6 COMBINED SESSIONS



BEFORE APPLICATIONS



AFTER APPLICATIONS

Direct line to contact dermatologists and research biologists for scientific questions or enquiries regarding outpatient treatment:
scientificdiv.gpq@wiqo.eu

wiqo[®]
a GPQ brand

GPQ srl

Operational Headquarters: Via Flavia, 23/1 - 34148 Trieste - Italy
Tel.: +39 040 360408 - Fax: +39 040 761393 - gpq@wiqo.eu
www.wiqo.com

PRX-T₃₃®

WiQO

ASSOCIATED WITH
PDO THREADS



PROTOCOL FOR USE

ADVANTAGES

The oedema caused by PRX-T₃₃ forms a less vascularised cleavage plane, which promotes subsequent thread penetration and reduces pain and ecchymoses.

Whereas the effect of threading is visible after some time, the result of the associated treatment is immediately visible thanks to the deep hydration caused by PRX-T₃₃, leading to immediate patient satisfaction.

This association treatment stimulates both type I and type III collagen production, thus giving a more natural effect compared to threading on its own. Moreover, this entails that fewer threads are needed in the following sessions.

Apply PRX-T₃₃ in linear wrinkles ('Necklace lines') with the special spatula along the depression, rubbing until the skin slightly rises, which will allow the thread to be placed in a more superficial plane.

TREATMENT METHOD

- 1) Cleanse skin with P Solution or other delicate cleanser and dry well.
- 2) Apply PRX-T₃₃ manually with a massage carried out with a specific technique all over the area to be treated until fully absorbed.
- 3) Apply PRX-T₃₃ repeatedly, on average 3 times.
- 4) Implant polydioxanone threads.
- 5) Apply ice for a few minutes.

PROTOCOL

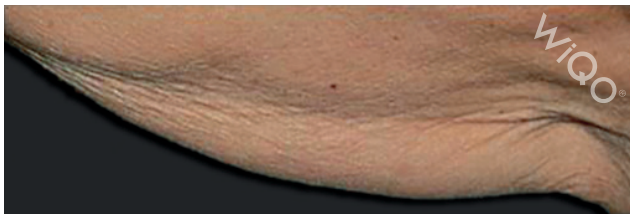
Session 1: PRX-T₃₃ + PDO threads > Session 2: PRX-T₃₃ alone > Session 3: PRX-T₃₃ alone



BEFORE APPLICATIONS



AFTER APPLICATIONS



BEFORE APPLICATIONS



AFTER 5 SESSIONS WITH PRX-T₃₃

Direct line to contact dermatologists and research biologists for scientific questions or enquiries regarding outpatient treatment:
scientificdiv.gpq@wiqo.eu

wiQO[®]
a GPQ brand

GPQ srl

Operational Headquarters: Via Flavia, 23/1 - 34148 Trieste - Italy
Tel.: +39 040 360408 - Fax: +39 040 761393 - gpq@wiqo.eu
www.wiqo.com

PRX-T[®]₃₃

WiQO

PROTOCOL FOR STRETCH MARKS



PROTOCOL FOR USE

DEEP STRETCH MARKS (DEPRESSED OR EMPTY TO THE TOUCH)

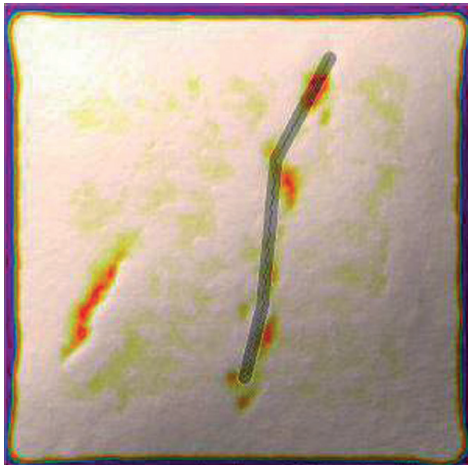
5-10 weekly sessions of PRX-T₃₃ alone applied with the special spatula covered with a nitrile glove 2-3 times along the lesion as if you wanted to erase it until it raises.

Between sessions apply WiQo ELASTICIZING ANTI-DRYING BODY CREAM every day at home.

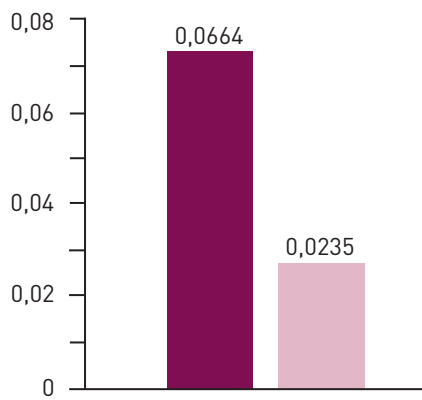
WHITE AND PEARLY STRETCH MARKS

After having performed the technique described above until the lesion has risen, proceed with a fractional non-ablative RF or laser treatment, or with microneedling.

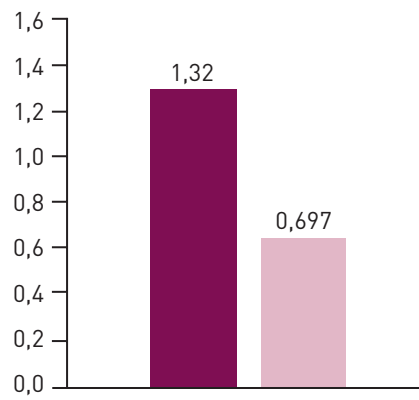
Repeat the treatment 3-5 times.



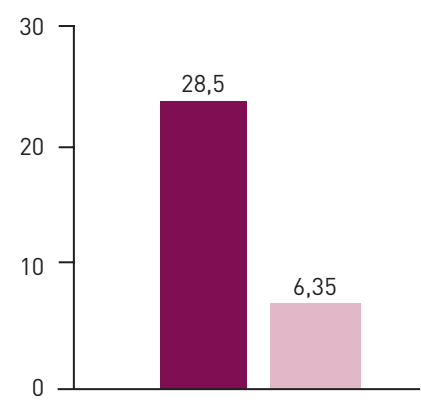
Mean depth of the wrinkle (mm)



Mean width of the wrinkle (mm)



Overall wrinkle size



Upper RH abdominal stretch mark Before
 Upper RH abdominal stretch mark After 6 sessions

Instrumental evaluation carried out with Antera 3D



BEFORE APPLICATIONS



AFTER 6 APPLICATIONS

Direct line to contact dermatologists and research biologists for scientific questions or enquiries regarding outpatient treatment:
scientificdiv.gpq@wiqo.eu



GPQ srl

Operational Headquarters: Via Flavia, 23/1 - 34148 Trieste - Italy
 Tel.: +39 040 360408 - Fax: +39 040 761393 - gpq@wiqo.eu
www.wiqo.com

PRX-T₃₃[®]

WiQO

ASSOCIATED WITH
PLATELET RICH PLASMA (PRP)
IN THE TREATMENT OF ALOPECIA



PROTOCOL FOR USE

RATIONALE OF THE ASSOCIATION

It has been demonstrated that the number of activated fibroblast receptors and their affinity increase significantly when they come into contact with platelet growth factors twice at 8 hours' interval. (Tab. 1).

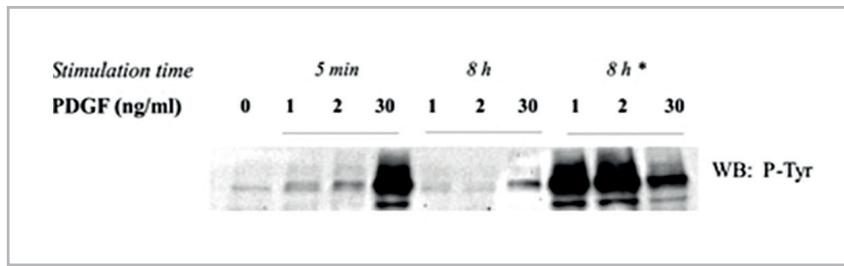
Clinical experience has shown an enhanced response to the treatment after even after an a-specific stimulation. This stimulation is performed with PRX-T₃₃ 8 hours before the PRP procedure.

A clinical trial on 35 patients has shown a lower number of non-responder patients and enhanced results among those pre-treated with PRX-T₃₃ compared to those that were not pre-treated (Tab. 2).

TREATMENT METHOD

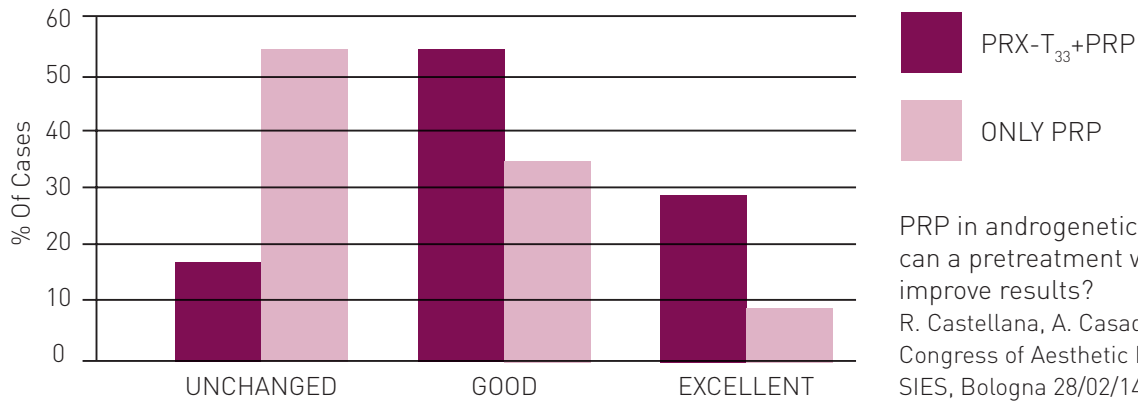
- 1) Part the hair section by section as if you were applying a dye and massage the scalp with PRX-T₃₃ until fully absorbed.
- 2) Wait 8 hours before applying the platelet rich plasma.

Tab.1



Understanding the specificity of receptor tyrosine kinases signaling
 De Donatis A., Cirri P. - Commun Integr Biol. 2008

Tab. 2 Results of the entire population



PRP in androgenetic alopecia: can a pretreatment with TCA-H₂O₂ improve results?
 R. Castellana, A. Casadei - 17th International Congress of Aesthetic Medicine and Surgery SIES, Bologna 28/02/14



♂ 22 a. Stage III to I according to the Hamilton-Norwood scale



♀ 67 a. Stage I-3 to I-2 according to the Ludwig scale

Direct line to contact dermatologists and research biologists for scientific questions or enquiries regarding outpatient treatment:
scientificdiv.gpq@wiqo.eu



GPQ srl
Operational Headquarters: Via Flavia, 23/1 - 34148 Trieste - Italy
 Tel.: +39 040 360408 - Fax: +39 040 761393 - gpq@wiqo.eu
www.wiqo.com

PRX-T₃₃®

WiQO

COMBINED WITH
ABLATIVE RADIOFREQUENCY



USE PROTOCOL

BENEFITS

Chemical (PRX-T₃₃) and physical stimulation (RF) act at different levels of the skin and the dermis to create a synergy, magnifying the therapeutic response and the final aesthetic results.

DIRECTIONS

- 1) Session of PRX-T₃₃ one week prior to the application of RF, immediately followed by the application of WiQo NOURISHING AND MOISTURISING CREAM FOR DRY SKIN and by the home after-treatment using WiQo home care products.
- 2) Treatment with ABLATIVE RF, after cleaning the face with P Solution.
- 3) Once the epidermis is fully restored, WiQo home products shall be resumed.
- 4) 3 weeks after treatment with RF carry out a new treatment with PRX-T₃₃.

INSTRUCTIONS

Repeat the treatment with PRX-T₃₃ every 21 days. Every 30 days, repeat the ablative RF session so that PRX-T₃₃ is always done one week before the next ablative RF session.

BEFORE



AFTER



COURTESY DR. FRANCO PAOLO ALBERICO

Direct line with researching dermatologists and biologists for scientific questions, or enquiries regarding outpatient treatment:
scientificdiv.gpq@wiqo.eu

wiqo[®]
a GPQ brand

GPQ srl

Operational headquarters: Via Flavia, 23/1 - 34148 Trieste - Italy
Phone: +39 040 360408 - Fax: +39 040 761393 - gpq@wiqo.eu
www.wiqo.com

PRX-T₃₃[®]

WiQO

COMBINED WITH
NON-ABLATIVE FRACTIONAL RF



USE PROTOCOL

BENEFITS

Chemical (PRX-T₃₃) and physical stimulation (RF) act at different levels of the skin and the dermis to create a synergy, magnifying the therapeutic response and the final aesthetic results.

DIRECTIONS

- 1) Cleansing of the face with P solution.
- 2) Treatment with NON-ABLATIVE RF.
- 3) Application of PRX-T₃₃ (from 2 to 3 applications).
- 4) Application of the WiQo NOURISHING AND MOISTURISING CREAM FOR DRY SKIN.

INSTRUCTIONS

Plan at least six consecutive weekly sessions, (or more based on the starting conditions).

BEFORE



AFTER



COURTESY DR. FRANCO PAOLO ALBERICO

Direct line with researching dermatologists and biologists for scientific questions, or enquiries regarding outpatient treatment:
scientificdiv.gpq@wiqo.eu

wiqo[®]
a GPQ brand

GPQ srl

Operational headquarters: Via Flavia, 23/1 - 34148 Trieste - Italy
Phone: +39 040 360408 - Fax: +39 040 761393 - gpq@wiqo.eu
www.wiqo.com

PRX-T₃₃[®]

WiQO

COMBINED WITH
NON-ABLATIVE FRACTIONAL LASER



USE PROTOCOL

BENEFITS

Chemical (PRX-T₃₃) and physical stimulation (laser) act on the dermal matrix in different ways, but have a synergy effect and maximise the therapeutic results.

DIRECTIONS

Session of non-ablative fractional laser therapy every 4/6 weeks depending on the aggressiveness of the treatment (to be repeated 2 to 4 times depending on the initial skin damage).

- 1) Thorough cleansing of the entire surface to be treated and removal of the lipidic film with P solution.
- 2) Parameter setting.
- 3) Laser treatment according to the protocol programmed by the operator.
- 4) Immediate after-treatment with application of specific products.

INSTRUCTIONS

Weekly application of PRX-T₃₃ in the period between the two subsequent laser sessions, with 2-3 applications depending on the specific product instructions and applying WiQo home products.

BEFORE



AFTER



COURTESY DR. FRANCO PAOLO ALBERICO

Direct line with researching dermatologists and biologists for scientific questions, or enquiries regarding outpatient treatment:
scientificdiv.gpq@wiqo.eu

WiQO[®]
a GPQ brand

GPQ srl

Operational headquarters: Via Flavia, 23/1 - 34148 Trieste - Italy
Phone: +39 040 360408 - Fax: +39 040 761393 - gpq@wiqo.eu
www.wiqo.com