



Informational material intended exclusively for medical professionals. PRX-T<sub>33</sub> is a Class 1 medical device.

**PRX-T<sup>®</sup><sub>33</sub>**  
**wiQO**

**NEEDLE-FREE  
BIOREVITALIZATION**

**PROTOCOLS OF ASSOCIATION**

**wiQO<sup>®</sup>**

**FORMULATORS OF SKIN CONFIDENCE**



**PRX-T<sub>33</sub>**<sup>®</sup>  
wiqo  
NEEDLE-FREE  
BIOREVITALIZATION

## INDEX

- / PRX-T<sub>33</sub> treatment kit \_02
- / Correct method of PRX-T<sub>33</sub> application \_04
- / Protocols of association:
  - / Superficial, Medium and Deep Fillers \_8
  - / Carboxytherapy \_10
  - / Hydrodermabrasion \_12
  - / Non-ablative RF \_13
  - / Microneedling \_14
  - / Injectable Biorevitalization \_16
  - / PDO Threads \_18
  - / Ablative RF \_20
  - / Non-ablative Laser \_21
- / Special protocols:
  - / Stretchmarks \_22
  - / Cellulite \_24
  - / Alopecia \_26

# PRX-T<sub>33</sub> TREATMENT KIT

Needle-free biorevitalization in just a few simple steps, completely painless



## PREPARE

### P solution

Pre-treatment with calibrated acids.



## STIMULATE

### PRX-T<sub>33</sub>

Needle-free biorevitalizer.



## HYDRATE

### WiQo Nourishing and Moisturizing Cream for Dry Skin

Post-treatment cream for face neck and décolleté.



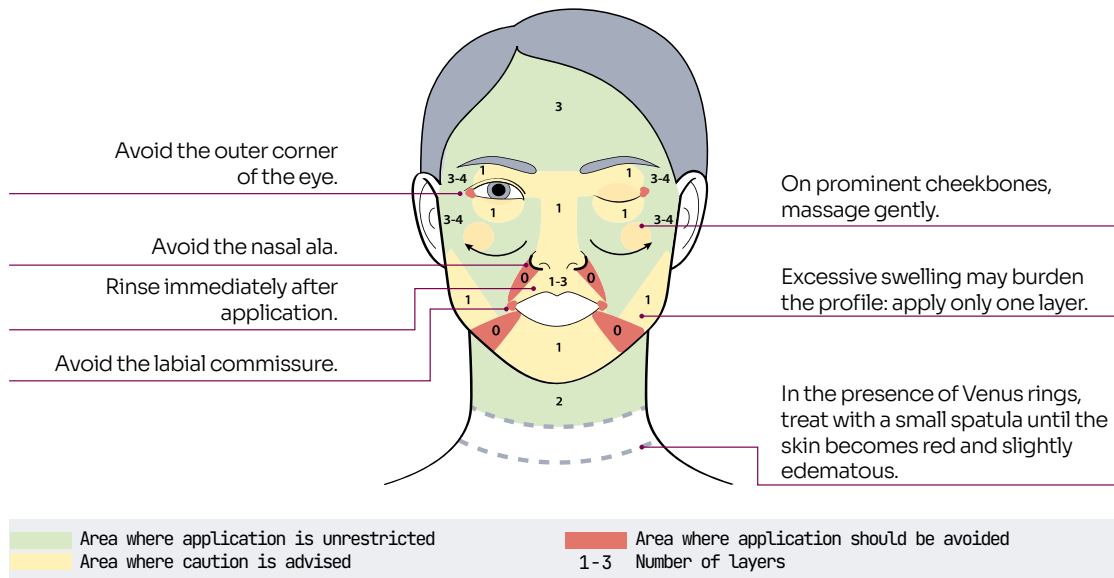
## HYDRATE

### WiQo Firming Body Cream

Post-treatment cream for the body.



# CORRECT METHOD OF PRX-T<sub>33</sub> APPLICATION



- To avoid allergic reactions, use **nitrile gloves**, not latex. Cover the tip of the WiQo spatula with a nitrile glove.
- Begin application on a small, limited area.
- Always massage the product on well-lubricated skin to avoid abrasions (if the glove or spatula no longer glides, apply more product).
- A slight tingling sensation is normal. If the patient experiences intense burning, it indicates the skin is irritable. In such cases, rinse the area with water, stop the session, and apply **WiQo Nourishing and Moisturizing Cream for Dry Skin**.
- When applying to acne-prone skin, especially on delicate facial areas (e.g., sides of the mouth), perform a maximum of two applications of **PRX-T<sub>33</sub>**, massaging gently. An excessively aggressive massage can abrade damaged skin and cause severe inflammation.
- Avoid the under-eye area (where bags form) to prevent unwanted swelling in this area in the days following application or apply only one layer with light pressure.
- Exercise caution when applying to the intermammary sulcus.
- Advise the patient to use adequate sun protection after treatment.



## WARNINGS\*

- / For external use only, topical application.
- / Avoid contact with eyes; in case of contact, rinse with saline solution.
- / If the patient is using topical retinoic acid (isotretinoin), discontinue its use 15 days before applying **PRX-T<sub>33</sub>**.
- / Do not apply to the corners of the mouth if affected by angular cheilitis.
- / Avoid application on nevi of any histological type and/or on skin with burns of various degrees, sunburn, etc.
- / Treat at a reasonable distance from the last shave or waxing.
- / Store **PRX-T<sub>33</sub>** at 2°C/8°C, even after opening the vial.

\*It is recommended to follow the instructions as per the package leaflet.



## GENERAL CONTRAINDICATIONS

- / Irritated and/or irritable skin
- / Seborrheic or atopic dermatitis
- / Macerated skin, open wounds, rashes, and/or herpetic eruptions
- / Epidermal and dermal tumor pathologies or other neoplastic conditions with possible local involvement (e.g., cutaneous lymphoma)
- / Allergy to the product components
- / Pregnancy and breastfeeding



## POSSIBLE SIDE EFFECTS

- / Exfoliation (which may be intense)
- / Redness (immediate or delayed)
- / Burning sensation during application (which may be intense and immediate)
- / Dryness
- / Anaphylaxis
- / Itching
- / Persistent inflammation
- / Appearance of dark, round patches within two days after application: these are areas of thicker skin that will dry out and disappear through natural exfoliation within a few days.



## USEFUL INFORMATION

In case of side effects that cause persistent inflammation (erythema lasting more than one day), it is important to be aware of the risk of hyperpigmentation in predisposed individuals. This is not directly caused by trichloroacetic acid, but rather by the erythema. We recommend monitoring such patients to ensure they avoid sun exposure and use high-protection sunscreen. If necessary, treat the inflammation accordingly.





## **PRX-T<sub>33</sub>** + DEEP AND MEDIUM FILLERS

### INDICATIONS OF USE

Combination treatment targeting facial volume loss and aimed to improve volume and reduce wrinkles depth.

### ADVANTAGES

Deep fillers (e.g. zygomatic) restore volume to compartments that have lost it with ageing, acting on a deep plane. **PRX-T<sub>33</sub>** contributes to lifting the skin thanks to the oedema it induces, and it improves the texture and plumpness of the skin. Moreover, **PRX-T<sub>33</sub>**'s application technique helps spread deep and medium fillers homogeneously in the injection plane.

### APPLICATION METHOD

1. Cleanse the skin with **WiQo P solution** and dry well.
2. After disinfecting, proceed with the filler injection according to the manufacturer's instructions.
3. Pierce the cap of **PRX-T<sub>33</sub>** vial with the cannula's tip or an 18G needle.
4. Insert the syringe on the cannula and extract the desired amount of product.
5. Massage the product with the specific technique onto the skin until fully absorbed. **When applying, be careful to massage in the correct direction according to how the filler is positioned to avoid displacing it.**
6. Remove product residue with a wet pad.
7. Apply **WiQo Nourishing and Moisturizing Cream for Dry Skin**.

### TREATMENT SCHEDULE

Schedule additional **PRX-T<sub>33</sub>** sessions as required, one week apart.

## **PRX-T<sub>33</sub>** + SUPERFICIAL FILLERS

### INDICATIONS OF USE

Combination treatment targeting fine lines and wrinkles depth.

### ADVANTAGES

When treating superficial wrinkles, **PRX-T<sub>33</sub>** may be used before the filler injection: applied before, **PRX-T<sub>33</sub>** induces a slight oedema that lifts the epidermis that detaches fine wrinkles from the deep plane and improves the insertion and distribution of superficial filler.

### APPLICATION METHOD

1. Cleanse the skin with **WiQo P solution** and dry well.
2. Pierce the cap of **PRX-T<sub>33</sub>** vial with the cannula's tip or an 18G needle.
3. Insert the syringe on the cannula and extract the desired amount of product.
4. Apply **PRX-T<sub>33</sub>** as usual.
5. Inject the filler as per manufacturer's directions.
6. Remove product residue with a wet pad.
7. Apply **WiQo Nourishing and Moisturizing Cream for Dry Skin**.

### TREATMENT SCHEDULE

Schedule additional **PRX-T<sub>33</sub>** sessions as required, one week apart.



**PRX-T<sub>33</sub>** + **CARBOXYTHERAPY**

**INDICATIONS OF USE**

Combination treatment targeting peri-ocular aging, under-eye dark circles, bags and mimic wrinkles, and to improve skin density and elasticity. Additionally, it helps reduce local fat deposits/cellulite and fight skin laxity.

**ADVANTAGES**

Carboxytherapy's double mechanism of action (chemical on micro-circulation and mechanical detachment) combines particularly well with the action of **PRX-T<sub>33</sub>**. This protocol can also be used in summer.

**APPLICATION METHOD**

1. Cleanse the skin with **WiQo P solution** and dry well.
2. Pierce the cap of **PRX-T<sub>33</sub>** vial with the cannula's tip or an 18G needle.
3. Insert the syringe on the cannula and extract the desired amount of product.
4. Massage the product with the specific technique onto the skin until fully absorbed. When treating small areas, apply using the **WiQo rubber-tipped spatula** covered with a nitrile glove.
5. Infuse CO<sub>2</sub> as per manufacturer's directions.
6. Apply 1 or 2 other layers of **PRX-T<sub>33</sub>** with the specific massage. This will help spread the CO<sub>2</sub>.
7. Remove product residue with a wet pad.
8. Apply **WiQo Nourishing and Moisturizing Cream for Dry Skin** if treating the face, or **WiQo Firming Body Cream**, if treating arms or legs.

**TREATMENT SCHEDULE**

Face and eye-contour: 3 combined sessions, 15 days apart.

Body: 5-10 weekly sessions to patient's needs.

**BEFORE / AFTER RESULTS**

♀ 50 YO

Courtesy of R. Castellana, MD



Before



After 3 weekly sessions

## **PRX-T<sub>33</sub>** + HYDRODERMOABRASION

### INDICATIONS OF USE

Combination treatment targeting aging, dull, blemished, photodamaged and uneven skin, dry and dehydrated skin, acne prone skin and mild acne scarring.

### ADVANTAGES

**PRX-T<sub>33</sub>** makes the stratum corneum thinner. As a result, blackheads become more superficial and easier to remove. **PRX-T<sub>33</sub>** provides deep and instant hydration which loosens the skin and produces a very light peeling effect which lightens and brightens it.

### APPLICATION METHOD

1. Cleanse the skin with **WiQo P solution** and dry well.
2. Pierce the cap of **PRX-T<sub>33</sub>** vial with the cannula's tip or an 18G needle.
3. Insert the syringe on the cannula and extract the desired amount of product.
4. Massage, with the specific technique, the product onto the skin until fully absorbed. When treating small areas, apply using **WiQo rubber-tipped spatula** covered with a nitrile glove.
5. Remove **PRX-T<sub>33</sub>** residue with a wet pad.
6. Perform the Hydrodermoabrasion session as per manufacturer's indications. Avoid acid peels in this phase.
7. Apply 2 more layers of **PRX-T<sub>33</sub>** on the entire area, spending more time on residual blackheads, if necessary.
8. Remove **PRX-T<sub>33</sub>** residue with a wet pad.
9. Apply **WiQo Nourishing and Moisturizing Cream for Dry Skin** a few minutes later.

### TREATMENT SCHEDULE

Carry out the set number of sessions, one week apart.

## **PRX-T<sub>33</sub>** + NON-ABLATIVE FRACTIONAL RADIOFREQUENCY

### INDICATIONS OF USE

Combination treatment targeting face, neck and body skin laxity.

### ADVANTAGES

Chemical (**PRX-T<sub>33</sub>**) and physical stimulations (**RF**) act on different levels of dermis and epidermis, creating a synergy, which amplifies the therapeutic response and the final aesthetic results.

### APPLICATION METHOD

1. Cleanse the skin with **WiQo P solution** and dry well.
2. Perform the non-ablative radiofrequency procedure.
3. Pierce the cap of the **PRX-T<sub>33</sub>** vial with the cannula's tip or an 18G needle.
4. Insert the syringe on the cannula and extract the desired amount of product.
5. Massage the product with the specific technique onto the skin until fully absorbed. When treating small areas, apply using **WiQo rubber-tipped spatula** covered with a nitrile glove.
6. Repeat the application of **PRX-T<sub>33</sub>** 2-3 times using the same technique.
7. Remove product residue with a wet pad.
8. Apply **WiQo Nourishing and Moisturizing Cream for Dry Skin** if treating the face, or **WiQo Firming Body Cream**, if treating the body.

### TREATMENT SCHEDULE

Plan at least six consecutive weekly sessions (or more based upon the initial conditions).

## BEFORE / AFTER RESULTS

Courtesy Dr. F. P. Alberico



Before

After a complete cycle



## PRX-T<sub>33</sub> + MICRONEEDLING

### INDICATIONS OF USE

Combination treatment targeting depressed scars, post-inflammatory dermal atrophy, indelible wrinkles, and enlarged pores.

### ADVANTAGES

The synergistic effect of chemical (PRX-T<sub>33</sub>) and mechanical (microneedling) stimulation maximizes aesthetic results and patient's satisfaction.

### APPLICATION METHOD

Optional: apply anesthetic cream on the area to be treated.

1. Cleanse the skin with **WiQo P solution** and dry well.
2. Pierce the cap of **PRX-T<sub>33</sub>** vial with the cannula's tip or an 18G needle.
3. Insert the syringe on the cannula and extract the desired amount of product.
4. Massage the product with the specific technique onto the skin until fully absorbed. When treating small areas, apply using **WiQo rubber-tipped spatula** covered with a nitrile glove.
5. Repeat the application of **PRX-T<sub>33</sub>** for 2-3 times until the depressed areas of the scars, if present, are lifted.
6. Perform the micro-needling as per manufacturer's directions.
7. Immediately after the needling, apply 1 or 2 layers of **PRX-T<sub>33</sub>**.
8. Rinse the area with water.
9. Apply wet gauze on the skin and place an ice pack on top.
10. Do not apply other products for the following 24 hours (creams, make-up, etc.) for an immediate soothing effect.

### TREATMENT SCHEDULE

3 to 6 sessions according to patient's needs and expectations.

## BEFORE / AFTER RESULTS



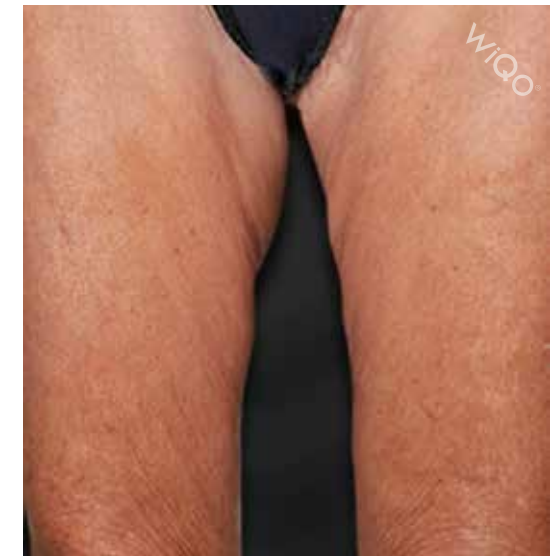
Before



After 6 sessions



Before



After a complete cycle

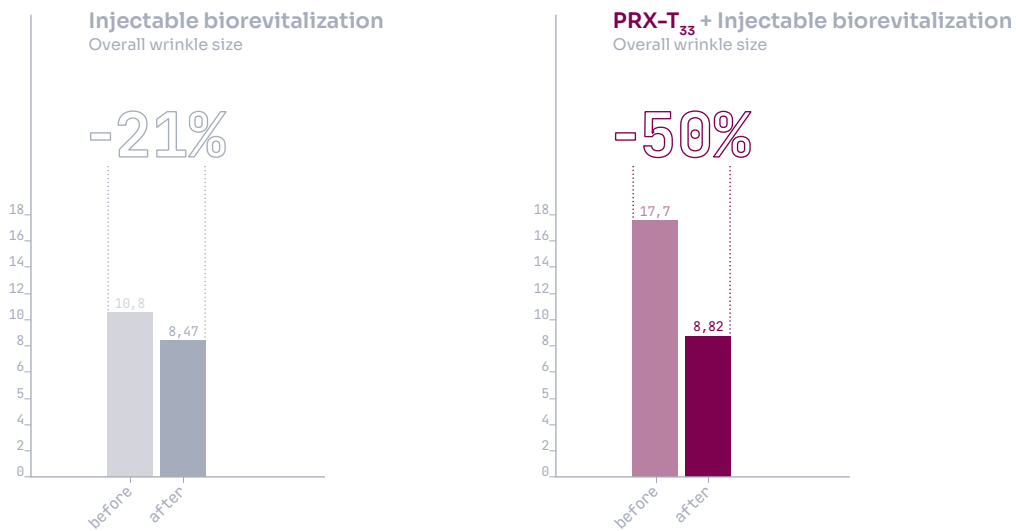
# PRX-T<sub>33</sub> + INJECTABLE BIORIVITALIZATION

## INDICATIONS OF USE

Combination treatment targeting dry and dehydrated skin, photodamaged skin, skin laxity and improving skin density and elasticity of the face.

## ADVANTAGES

The synergistic effect of **exo-and endobiorevitalization** gives a double dermal stimulation, with much better results than the two treatments performed separately (see chart).



The association of the two bio-revitalization treatments leads to a **50,2% improvement vs the 21,6% improvement** obtained with injectable biorevitalization alone.  
Instrumental evaluation carried out with skin 3D multispectral camera.

The oedema produced by **PRX-T<sub>33</sub>** mitigates the pain of the subsequent injections and reduces bruising.

**PRX-T<sub>33</sub>** provides deep and immediate hydration which tightens the skin. Additionally, it accelerates skin turnover which results in bright and radiant skin.

The patient is immediately satisfied, even before the effect of the fibroblast stimulation, which takes approximately twenty days to become visible.

## APPLICATION METHOD

1. Cleanse the skin with **WiQo P solution** and dry well.
2. Pierce the cap of **PRX-T<sub>33</sub>** vial with the cannula's tip or an 18G needle.
3. Insert the syringe on the cannula and extract the desired amount of product.
4. Massage the product with the specific technique until fully absorbed. When treating small areas, apply using WiQo rubber-tipped spatula covered with a nitrile glove.
5. Repeat application 2-3 times (EXOBIOREVITALIZATION).
6. Inject the biorevitalizing pool, through small intradermal wheals (ENDOBIOREVITALIZATION).
7. Remove product residue with a damp cloth.
8. Apply **WiQo Nourishing and Moisturizing Cream for Dry Skin**.

## TREATMENT SCHEDULE

Biorevitalization treatments are performed in 3 sessions, 20 days apart: schedule 1 **PRX-T<sub>33</sub>** session between two combined ones.

- |   |   |
|---|---|
| 1. PRX-T <sub>33</sub> + biorevitalizing pool | 4. PRX-T <sub>33</sub>                        |
| 2. PRX-T <sub>33</sub>                        | 5. PRX-T <sub>33</sub> + biorevitalizing pool |
| 3. PRX-T <sub>33</sub> + biorevitalizing pool |   |

## BEFORE / AFTER RESULTS



Before



After a complete cycle  
Right side: combined treatments  
Left side: injectable bio-revitalizer only

## PRX-T<sub>33</sub> + PDO THREADS

### INDICATIONS OF USE

Combination treatment targeting crow's feet and laugh lines, sagging skin around the cheeks, necklace lines and inner-arms, fine lines on the forehead and for jawline definition.

### ADVANTAGES

PRX-T<sub>33</sub> causes a temporary cutaneous oedema which leads to a less vascularized cleavage plane. This facilitates PDO thread implant and reduces pain and risk of bruising.

PRX-T<sub>33</sub> provides an immediate and intense hydration, replenishing the skin and accelerating its turnover, with a brightening and glowing effect.

Therefore, while the effect of threading is visible after a period of time, PRX-T<sub>33</sub> performs visible results from the start leading to immediate patient satisfaction.

This protocol stimulates both type I and type III collagen production, thus giving a more natural effect than the application of threads alone. Moreover, this results in fewer threads being required in the following sessions.

### APPLICATION METHOD

1. Cleanse the skin with WiQo P solution and dry well.
2. Pierce the cap of PRX-T<sub>33</sub> vial with the cannula's tip or an 18G needle.
3. Insert the syringe on the cannula and extract the desired amount of product.
4. Massage with the specific technique, the product onto the skin until fully absorbed. When treating small areas, apply using WiQo rubber-tipped spatula covered with a nitrile glove.
5. Apply 1-2 layers of PRX-T<sub>33</sub> lengthwise, along the depression of linear wrinkles (eg. necklace lines) with the WiQo rubber-tipped spatula until the skin slightly rises.
6. Implant PDO Threads.
7. Remove PRX-T<sub>33</sub> residue with a wet a pad.
8. Apply wet gauze on the skin and place an ice pack on top.

### TREATMENT SCHEDULE

One combined session of PRX-T<sub>33</sub> and PDO threads and 2-3 PRX-T<sub>33</sub> sessions one week apart, to be continued according to the patient's needs and expectations.

## BEFORE / AFTER RESULTS



Before



After a complete cycle



Before



1 combined procedure and 4 other PRX-T<sub>33</sub> sessions alone



## PRX-T<sub>33</sub> + ABLATIVE RF

### INDICATIONS OF USE

Combination treatment targeting the appearance of wrinkles, scars, visible pores, stretch marks, uneven skin texture and pigmentation.

### ADVANTAGES

Chemical (PRX-T<sub>33</sub>) and physical stimulations (RF) act on different levels of dermis and epidermis, creating a synergy, which amplifies the therapeutic response and the final aesthetic results.

### TREATMENT SCHEDULE

Perform a PRX-T<sub>33</sub> treatment one week before the Ablative RF treatment and another PRX-T<sub>33</sub> session 3 weeks following the Ablative RF.

## BEFORE / AFTER RESULTS

Courtesy Dr. F. P. Alberico



Before

After a complete cycle

## PRX-T<sub>33</sub> + NON-ABLATIVE FRACTIONAL LASER

### INDICATIONS OF USE

Combination treatment targeting age spots, scars, sun-damaged skin, wrinkles.

### ADVANTAGES

Chemical (PRX-T<sub>33</sub>) and physical stimulation (laser) act on the dermal matrix in different ways. Performing a weekly application of PRX-T<sub>33</sub> between laser session allows a deep synergistic effect maximizing aesthetic results.

### TREATMENT SCHEDULE

Perform a PRX-T<sub>33</sub> treatment weekly in between the two sessions with laser, starting one week after the first session and ending one week before the second one.

## BEFORE / AFTER RESULTS

Courtesy Dr. F. P. Alberico



Before

After a complete cycle

## PRX-T<sub>33</sub> FOR STRETCHMARKS

### INDICATIONS OF USE

Treatment targeting deep stretch marks (depressed or hollow to the touch) as well as white and pearly ones (in association with other micro-invasive procedures).

### ADVANTAGES

PRX-T<sub>33</sub> promotes skin restructuring and makes the skin smoother and tighter.

### APPLICATION METHOD FOR RECENT STRETCHMARKS, DEPRESSED OR EMPTY UPON PALPATION

1. Cleanse the skin with WiQo P solution and dry well.
2. Pierce the cap of PRX-T<sub>33</sub> vial with the cannula's tip or and 18G needle.
3. Insert the syringe on the cannula and extract the desired quantity.
4. Apply the product with WiQo rubber-tipped spatula covered with a nitrile glove along the stretchmark lesion until fully absorbed.
5. Apply 1 or 2 additional layers of PRX-T<sub>33</sub> on the stretch mark as if to erase it, until the base has risen.
6. Remove PRX-T<sub>33</sub> residue with a wet pad.
7. Apply WiQo Nourishing and Moisturizing Cream for Dry Skin and recommend WiQo Firming Body Cream as home care.

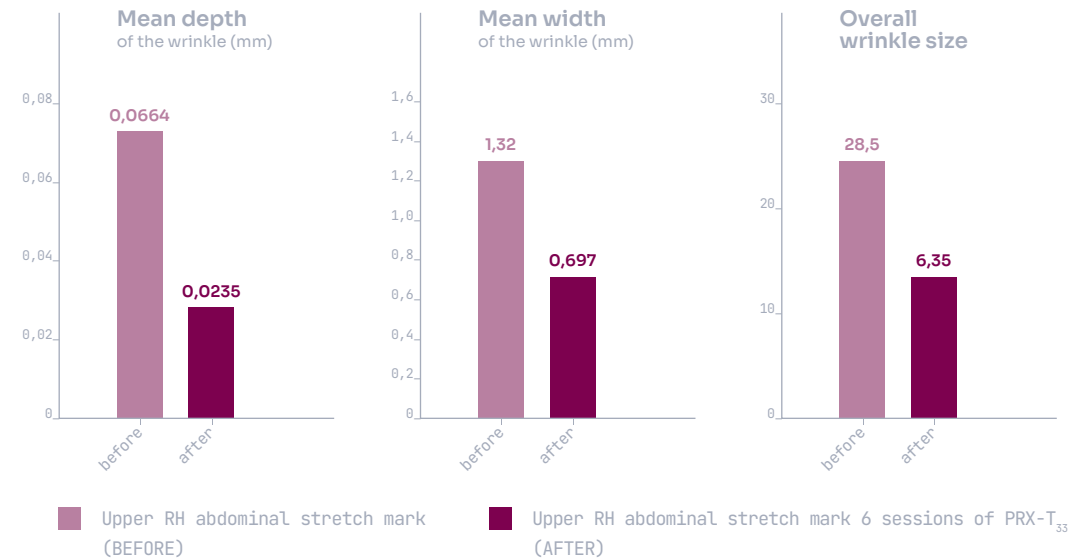
### APPLICATION METHOD FOR WHITE AND PEARLY STRETCH MARKS

This type of stretch mark can be treated with the associated protocol of PRX-T<sub>33</sub> and Non Ablative Fractional Radiofrequency, as well as with the one of PRX-T<sub>33</sub> and Microneedling.

### TREATMENT SCHEDULE

For recent stretchmarks, 5-10 PRX-T<sub>33</sub> sessions one a week apart.  
Combined with other procedures, 3-5 PRX-T<sub>33</sub> sessions, each one a week apart.

## PROTOCOLS OF ASSOCIATION - FOR STRETCHMARKS



## BEFORE / AFTER RESULTS

Instrumental evaluation carried out with skin 3D multispectral camera



Before

After 6 PRX-T<sub>33</sub> sessions



Before

After 6 PRX-T<sub>33</sub> sessions

## **PRX-T<sub>33</sub>** FOR BODY SKIN WHEN TREATING CELLULITE

### INDICATIONS OF USE

Treatment targeting skin laxity to improve skin quality, hydration and elasticity when treating cellulite.

### ADVANTAGES

Cellulite has a mixed inflammatory and vascular etiopathogenesis. The most established pharmacological treatment includes the on-site injection of substances that promote draining and restoration of volumes. These injections can take place at a dermal level (mesotherapy) or subcutaneous level (anti-lipodystrophic agents). The association with PRX-T<sub>33</sub> has the advantage of improving skin trophism and increasing its firmness, while using the WiQo Firming Body Cream at home completes stimulation and favours self-massage in the area, further contributing to the draining process.

### APPLICATION METHOD COMBINED WITH ANTI-LIPODYSTROPHIC AGENTS

1. Cleanse the skin with WiQo P solution and dry well.
2. Pierce the cap of PRX-T<sub>33</sub> vial with the cannula's tip or an 18G needle.
3. Insert the syringe on the cannula and extract the desired amount of product.
4. Massage the product onto the skin with the specific technique until fully absorbed.
5. Apply a second layer of PRX-T<sub>33</sub> with the same massage technique.
6. Inject anti-lipodystrophic agents.
7. Apply one other layer of PRX-T<sub>33</sub>.
8. Remove product residue with a wet pad.
9. Apply WiQo Firming Body Cream and prescribe it as home care.

### APPLICATION METHOD COMBINED WITH MESOTHERAPY

1. Cleanse the skin with WiQo P solution and dry well.
2. Pierce the cap of PRX-T<sub>33</sub> vial with the cannula's tip or an 18G needle.
3. Insert the syringe on the cannula and extract the desired amount of product.
4. Massage the product onto the skin with the specific technique until fully absorbed.
5. Carry out the mesotherapy session as indicated by the manufacturer.
6. Remove the excess with a damp cloth.
7. Do not apply any product immediately after the treatment.

### TREATMENT SCHEDULE

#### WITH ANTI-LIPODYSTROPHIC AGENTS

Weekly sessions according to this schedule:

PRX-T<sub>33</sub> + Polyamino acid anti-lipodystrophic gel

PRX-T<sub>33</sub> + Polyamino acid anti-lipodystrophic gel

PRX-T<sub>33</sub> by itself

PRX-T<sub>33</sub> + Polyamino acid anti-lipodystrophic gel

PRX-T<sub>33</sub> by itself

#### WITH MESOTHERAPY

5 weekly combined sessions.

## RESULTS



After a complete cycle

Left leg treated with anti-lipodystrophic gel only

Right leg treated with PRX-T<sub>33</sub> and gel combined



## PRX-T<sub>33</sub> + MESOTHERAPY WHEN TREATING ALOPECIA

### INDICATIONS OF USE

Treatment that aims to counteract hair loss and promote hair regrowth.

### ADVANTAGES

Biostimulation with PRX-T<sub>33</sub> improves mesotherapy's bioavailability. PRX-T<sub>33</sub> chemically stimulates the skin, leading to a synergistic effect with far superior results than the two treatments performed separately. Additionally, PRX-T<sub>33</sub> hydrates the skin and the edema it induces reduces injection pain.

### APPLICATION METHOD

Optional: apply anaesthetic cream on the area to be treated.

1. Pierce the cap of PRX-T<sub>33</sub> vial with the cannula's tip or an 18G needle.
2. Insert the syringe on the cannula and extract the desired amount of product.
3. Part the hair section by section, as if you were applying a hair dye, and massage the scalp with PRX-T<sub>33</sub> until fully absorbed. (EXOBIOREVITALIZATION)
4. Inject the mesotherapy pool in the same area through small intradermal wheals (ENDOBIOREVITALIZATION).
5. Harmonize all substances on the scalp with a gentle massage and leave patient to rest 15 minutes.
6. Rinse the scalp with a cotton pad soaked with water.

When treating the scalp, ensure the patient is aware that they may experience heavy flaking, especially following the first application. This is normal and part of the revitalization process.

### TREATMENT SCHEDULE

Plan combined mesotherapy sessions with intermittent sessions of PRX-T<sub>33</sub> alone.

- Session 1: PRX-T<sub>33</sub> + mesotherapy pool
- Session 2: PRX-T<sub>33</sub>
- Session 3: PRX-T<sub>33</sub> + mesotherapy pool
- Session 4: PRX-T<sub>33</sub>
- Session 5: PRX-T<sub>33</sub> + mesotherapy pool

## PRX-T<sub>33</sub> FOR ALOPECIA

### INDICATIONS OF USE

PRP is a therapeutic option for hair loss due to androgenetic alopecia, either as a monotherapy or as adjuvant to hair transplant.

### ADVANTAGES

This combination treatment allows to use less of the blood and inject only once. Moreover, the stimulation with PRX-T<sub>33</sub> is quick and it leads to little to no discomfort or downtime for the patient.

### RATIONALE OF ASSOCIATION

Platelets in PRP become activated when injected into the scalp and release multiple growth factors, which may promote hair growth.

However, it has been demonstrated that:

1. the success rate of PRP procedure depends on the number and affinity of activated fibroblast receptors
2. that these (number and affinity) increase significantly if they come into contact with platelet growth factors twice at 8 hour intervals. (compare TAB 1)

TAB.1

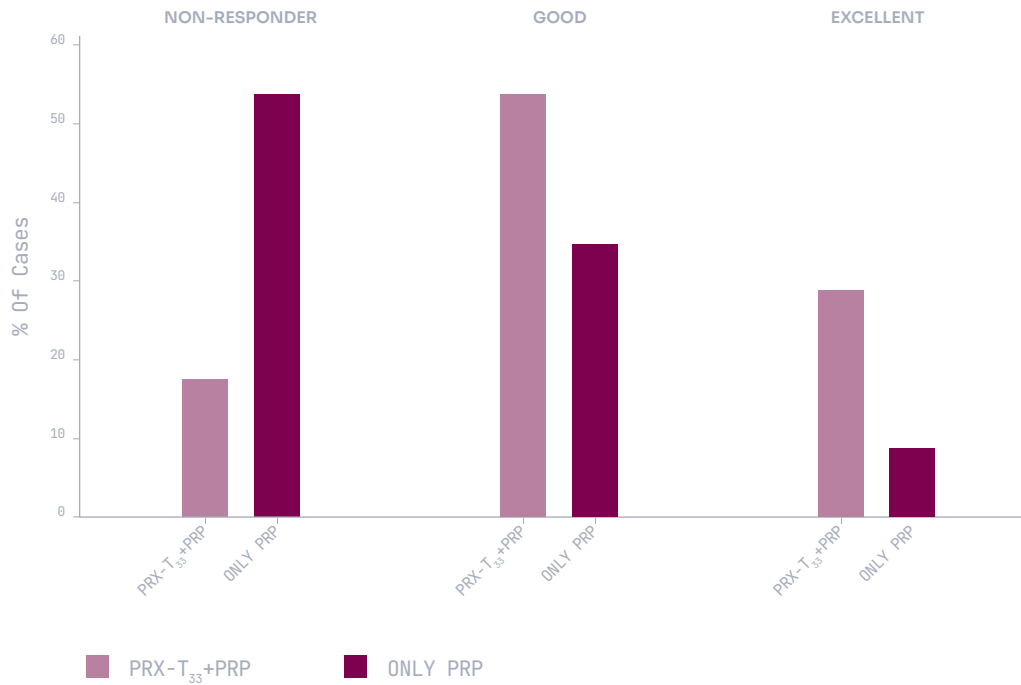


Understanding the specificity of receptor tyrosine kinases signaling  
De Donatis A., Cirri P. - Commun Integr Biol. 2008

Clinical experience, interestingly, has shown an enhanced success response not only with double PRP injection with an 8 hour interval but also after a stimulation with PRX-T<sub>33</sub> 8 hours to PRP injection.

A clinical trial on 35 patients has shown a lower number of non-responders and enhanced results among those pre-treated with **PRX-T<sub>33</sub>** compared to those that were not pre-treated (TAB. 2)

TAB. 2



PRP in androgenetic alopecia: can a pretreatment with TCA-H2O2 improve results?  
*R. Castellana, A. Casadei - 17<sup>th</sup> International Congress of Aesthetic Medicine and Surgery SIES, Bologna 28/02/2014*

### APPLICATION METHOD

1. Pierce the cap of **PRX-T<sub>33</sub>** vial with the cannula's tip or and 18G needle.
2. Insert the syringe on the cannula and extract the desired quantity.
3. Part the hair section by section as if you were applying a dye and massage the scalp with **PRX-T<sub>33</sub>** until fully absorbed.  
**ATTENTION!** When treating the scalp, ensure the patient is aware that they may experience heavy flaking, especially following the first application. This is normal and part of the revitalization process.
4. Clean the scalp with a wet pad.
5. Wait 8 hours before injecting PRP. It is very important to respect the 8 hours interval to maximize results.

## BEFORE / AFTER RESULTS

♂ 22 Y.O. STAGE III TO I (HAMILTON-NORWOOD SCALE)



Before



After

♀ 67 Y.O. STAGE I-3 TO I-2 (LUDWIG SCALE)



Before




After

### **DIRECT LINE**

with the scientific team  
for inquiries and complaints:  
[scientificdivision@wiqo.eu](mailto:scientificdivision@wiqo.eu)

### **WiQo S.p.A.**

Via Martinelli, 16  
34015, Muggia (Trieste)  
Italy  
Ph: +39 040 360408  
[info@wiqo.com](mailto:info@wiqo.com)  
[wiqo.com](http://wiqo.com)

 [@wiqo\\_official](https://www.instagram.com/wiqo_official)

**WiQO**<sup>®</sup>  
FORMULATORS OF SKIN CONFIDENCE